



## Production

### Model your production facility in the software

Set up tasks, work areas and work shifts customized to your company processes and equipment.

Create multiple relationships between tasks and work areas to support automated assembly routing based on material characteristics and production requirements.

Set up multiple internal shops with storage areas for each shop.

Set up user permissions for who can enter and edit production data.

### Record production progress as work is completed

Record production progress and capture who did the work and on what shift the work was completed.

Accommodate routing changes on the fly from the shop floor.

Record labor as you record progress, or record it separately.

Automatically apply accounting codes based on tasks, or enter them manually.

Easily un-complete progress to correct mistakes or address rework.

### Review production status and always know what's left to do

Click on any assembly in the Bill of Material and instantly know its production status.

Review the complete production history of an assembly in the Production Log.

View what's left to do for one or more projects, sequences, tasks or work areas and review recently completed tasks.

View the status of all assemblies in production in the multi-project, color-coded Production Explorer window.

Left-to-Do

Project	Assembly Mark	Task	Order	Work Area	Sequence	Lot
J13-056	1101A	Material-Prep	0	Prep	1	0
J13-056	1101A	Fit	1	Fitter Bay 2	1	0
J13-056	1101A	Ship	3	Ship Bay 2	1	0
J13-056	1108A	Fit	1	Fitter Bay 2	1	0
J13-056	1108A	Weld	2	Weld Bay 2	1	0
J13-056	1108A	Ship	3	Ship Bay 2	1	0
J13-088	122B1	Material-Prep	0	Prep	2	0

Production Explorer

Project	Qty	Mark	Seq	Lot	Issued	Dwgs rel	Rou...	Material-Prep	Fit	Weld	Ship
J13-056	1	1001A	1	0	03/Jun/13	02/Jun/13	1/1	1/1	0/1	1/1	0/1
J13-056	1	1002A	1	0	03/Jun/13	02/Jun/13	1/1	0/1	0/1	1/1	0/1
J13-056	1	1003A	1	0	03/Jun/13	02/Jun/13	1/1	1/1	1/1	1/1	0/1
J13-056	1	1004A	1	0	03/Jun/13	02/Jun/13	1/1	0/1	0/1	1/1	0/1
J13-056	2	1005A	1	0	03/Jun/13	02/Jun/13	2/2	2/2	0/2	2/2	0/2
J13-056	1	1006A	1	0	03/Jun/13	02/Jun/13	1/1	0/1	0/1	1/1	0/1
J13-056	1	1100A	1	0	03/Jun/13	02/Jun/13	1/1	1/1	0/1	0/1	0/1
J13-056	1	1101A	1	0	03/Jun/13	02/Jun/13	1/1	0/1	0/1	1/1	0/1
J13-056	6	1104A	1	0	03/Jun/13	02/Jun/13	0/6				
J13-056	4	1106A	1	0	03/Jun/13	02/Jun/13	0/4				
J13-056	2	1107A	1	0	03/Jun/13	02/Jun/13	0/2				
J13-056	2	1108A	1	0	03/Jun/13	02/Jun/13	2/2	2/2	0/2	1/2	0/2

## Shipping

### Stay on schedule with smart shipping management

View items available for loading by sequence/lot, by batch or by transfer load (job-site loads only).

Use transfer loads tools to ship items to one or more subcontractors (e.g., galvanizer and fireproofers), then easily add them to a job-site load.

View a real-time summary of weight capacity and available weight by load.

Attach documents and pictures to a load.

Use at-a-glance visual cues to monitor load status (e.g., loaded, staged, shipped, received, etc.).

Access Google Maps from the shipping area to generate a map and driving directions for a load.

Ship-to-site loads

Load no.	Loaded wt	Capacity wt	Created
S0001	37,422.32b	40,000.00b	13/Apr
S0002	45,674.64b	40,000.00b	13/Apr
S0003	37,556.72b	40,000.00b	13/Apr
S0004	40,142.91b	42,000.00b	13/Apr
S0005	41,989.31b	42,000.00b	13/Apr
S0006	42,153.18b	43,000.00b	13/Apr
S0007	41,577.27b	45,000.00b	13/Apr
S0008	41,360.93b	44,000.00b	13/Apr
S0009	42,650.64b	44,000.00b	14/Apr
S0010	53,313.30b	46,000.00b	14/Apr

Items on load

Assy mark	Qty	Type/size/grade	BOM wt ea	Loaded wt ea	Width	Length	Seq	Lot
2004A	144	RB 1 A36	10.05b	10.05b	0"	21' 7-1/2"	2	0
2010A	1	MC 12x31 A36	673.22b	673.22b	0"	15' 3-7/8"	2	0
2024A	4	L 6x4x5/8 A36	618.45b	618.45b	0"	24' 6-7/8"	2	0
2025A	1	MC 12x31 A36	761.76b	761.76b	0"	24' 6-7/8"	2	0
2026A	4	MC 12x31 A36	761.76b	761.76b	0"	24' 6-7/8"	2	0
2027A	1	MC 12x31 A36	761.76b	761.76b	0"	24' 6-7/8"	2	0
2028A	4	MC 12x31 A36	761.76b	761.76b	0"	24' 6-7/8"	2	0
2029A	4	L 6x4x5/8 A36	1,377.13b	1,377.13b	0"	31' 8-7/8"	2	0
2037A	4	L 6x4x5/8 A36	627.83b	627.83b	0"	15' 6-11...	2	0
2053A	5	MC 12x31 A36	743.35b	743.35b	0"	23' 11-3...	2	0

Production

Production module | Shipping module



## Batching

### Improve production efficiency and manage priorities

Use flexible production batching tools to meet company-wide and project-by-project requirements.

Split or combine batches at each step in the planning, production and shipping process (e.g., nest across batches, split the batches for production, then recombine—or split differently—for shipping and erection efficiency).

View a side-by-side running total of weight for all batches and shipped weight, and set a target weight for each batch.

Create nesting solutions, of any material type, to match production batches.

View batches by shop or by project and view assemblies available to be batched by sequence and lot or assembly type.

View the task status of assemblies summarized by batch, sequence or lot and review the Production Log by batch.

Filter by batch in BOM, production and shipping to support managing materials and production processes by batch.

View and edit batch schedules in a Gantt chart.

## Part Tracking

### Route and track parts through completion

Set up part work areas and part routing rules.

Track parts individually, or by batch and work area.

Summarize the status of routed parts in the Production Explorer.

Produce part tracking barcode labels for use with the ADC module.

## CNC Management

### Automate and expedite production workflow

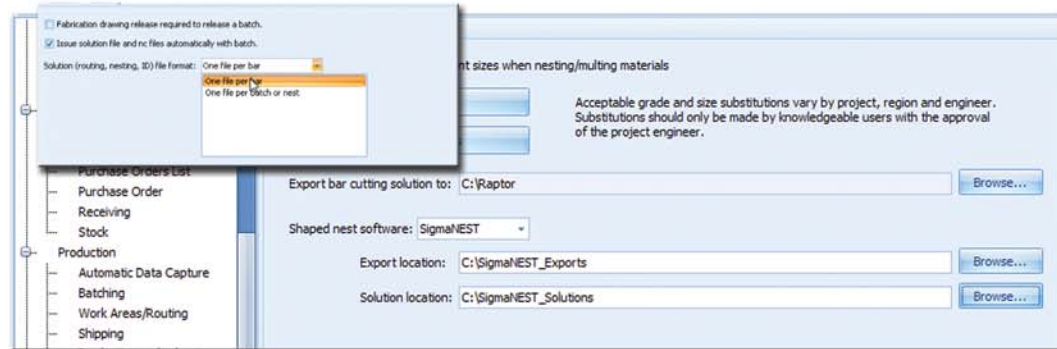
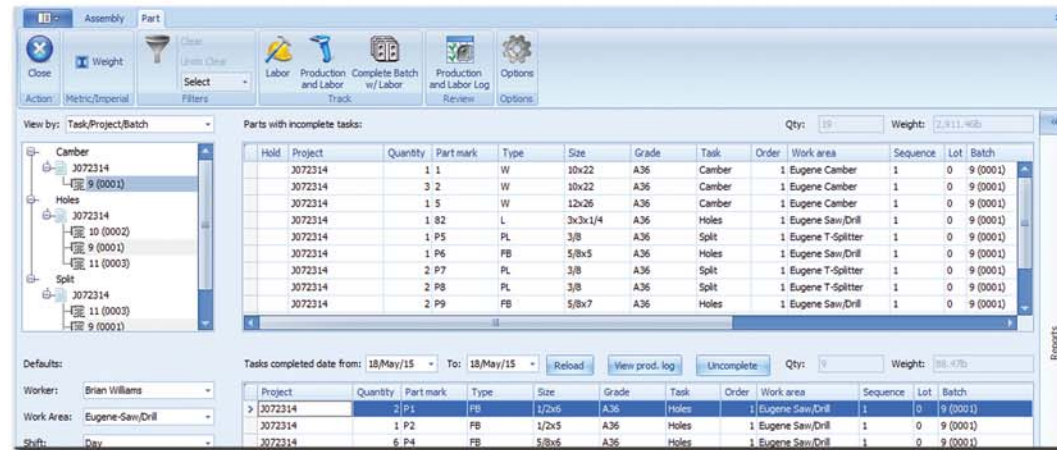
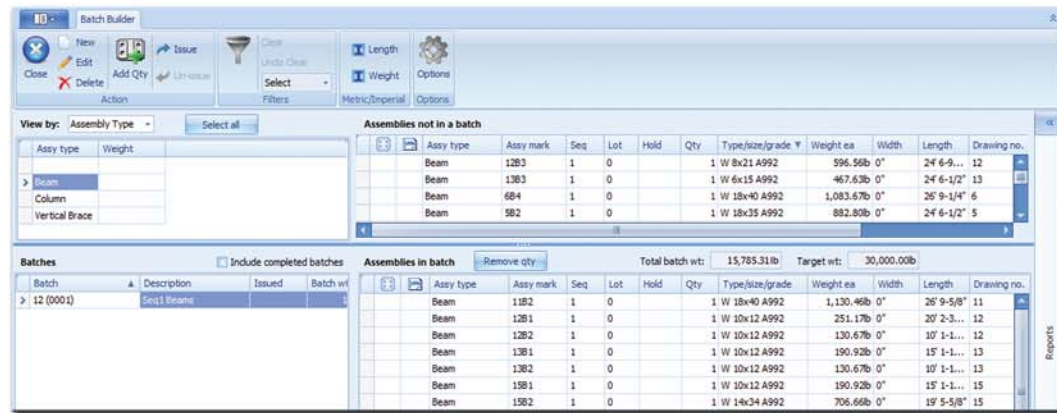
Send CNC data automatically to the machine in sync with batches of work, cut lists or even a specific bar about to be processed.

Communicate the nested solution (which parts, and how many, from a bar) and related routing and CNC data to CNC machines.

### Update production progress in real-time with ADC module

Update bar cut status and part status automatically from CNC machines in real-time.

Capture the work areas where the work was completed and, optionally, capture processing time.



**AVEVA Group plc**

High Cross  
Maddingley Road  
Cambridge  
CB3 0HB  
UK

Tel +44 (0) 1223 556655

Fax +44 (0) 1223 556666

**[www.aveva.com](http://www.aveva.com)**

Headquartered in Cambridge, England, AVEVA Group plc and its operating subsidiaries currently employ staff worldwide in Australia, Austria, Belgium, Brazil, Canada, Chile, China, Columbia, Denmark, France, Germany, Hong Kong, Hungary, India, Italy, Japan, Malaysia, Mexico, Norway, Poland, Russia, Saudi Arabia, Singapore, Spain, Sweden, South Korea, the United Arab Emirates, the United Kingdom and the United States of America. AVEVA also has representatives in additional countries around the world.

For more details on AVEVA Worldwide Offices, visit **[www.aveva.com/offices](http://www.aveva.com/offices)**

**[www.aveva/futureofsteelfabrication](http://www.aveva/futureofsteelfabrication)**

AVEVA believes the information in this publication is correct as of its publication date. As part of continued product development, such information is subject to change without prior notice and is related to the current software release. AVEVA is not responsible for any inadvertent errors. All product names mentioned are the trademarks of their respective holders. Copyright © 2016 AVEVA